

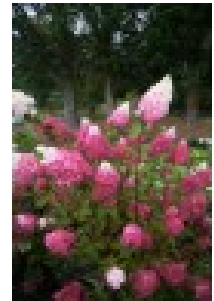
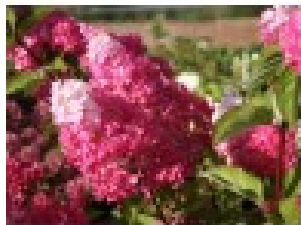
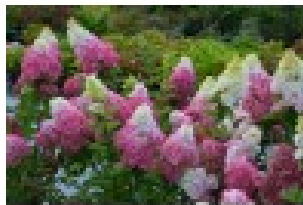


Hydrangea Paniculata FRAISE MELBA ® 'Renba' - Pépinières Renault

Product Hydrangea Paniculata FRAISE MELBA ® 'Renba'

Reference 11

Product Image



Summary

A delicious long lasting colour contrast FRAISE MELBA®...

Description

The panicles of FRAISE MELBA® are tapered but thick and without fertile flowers. At first white, end of July - beginning of August, they then turn red progressively from the bottom to the top. The contrast of the 2 colours reminds us of STRAWBERRY MELBA; very decorative, the red and white duo is longlasting. The flowerheads turn and stay completely dark pink, until the beginning of autumn. These colour shades can vary according to location, climate and type of soil. Upright and very attractive in ...

Technical sheet

Habit	: compact
Flowering period	: summer
Flowering colour	: pink
Foliage	: deciduous
Foliage colour	: green
Height	: between 1.50 m and 2 m
Width	: between 1 and 1.50 m
Position	: partial shade
Hardiness	: -30°C
Type of soil	: all soil
Use	: terrace
Selected by	: Jean RENAULT
License issuer	: Sapho
Type of protection	: PBR / European PBR
