



## Hydrangea paniculata SUNDÆ FRAISE ® 'Rensun' - Pépinières Renault

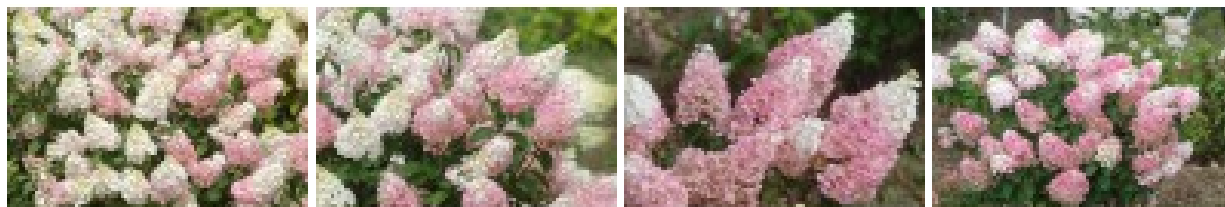
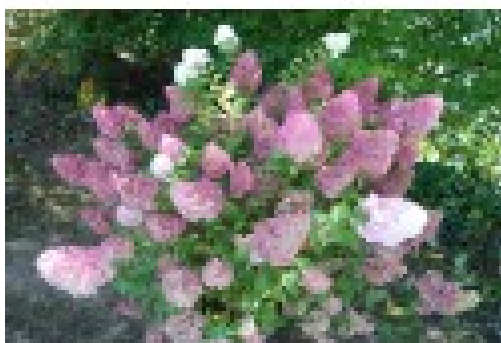
**Product** Hydrangea paniculata SUNDÆ FRAISE ® 'Rensun'

---

**Reference** 5

---

**Product Image**



**Summary** A delicacy... for the eyes!

---

**Description**

SUNDÆ FRAISE ® is exceptional for its smaller proportions. It grows well and has a very bushy, semi-up low growth. The red brown stems bear perfect, medium sized panicles from July to September. The abundant sterile flowers quickly turn pink from the end of July onwards: 'Strawberry Sundaes' (SUNDÆ FRAISE) in a delicious little shrub. These colour shades can vary according to exposure, climate and type of soil. The dif

---

<b>Technical sheet</b>	<b>Habit</b>	: bushy
	<b>Flowering period</b>	: autumn
	<b>Flowering period</b>	: summer
	<b>Flowering colour</b>	: white
	<b>Flowering colour</b>	: two-coloured
	<b>Flowering colour</b>	: pink
	<b>Flowering colour</b>	: green
	<b>Foliage</b>	: deciduous
	<b>Foliage colour</b>	: green
	<b>Height</b>	: between 1 m and 1.50 m
	<b>Width</b>	: between 75 cm and 1 m
	<b>Position</b>	: partial shade
	<b>Hardiness</b>	: -20°C
	<b>Type of soil</b>	: all soil
	<b>Use</b>	: pot
	<b>Use</b>	: balcony
	<b>Use</b>	: terrace
<b>Selected by</b>	: Jean RENAULT	
<b>License issuer</b>	: Sapho	
<b>Type of protection</b>	: PBR / European PBR	

---